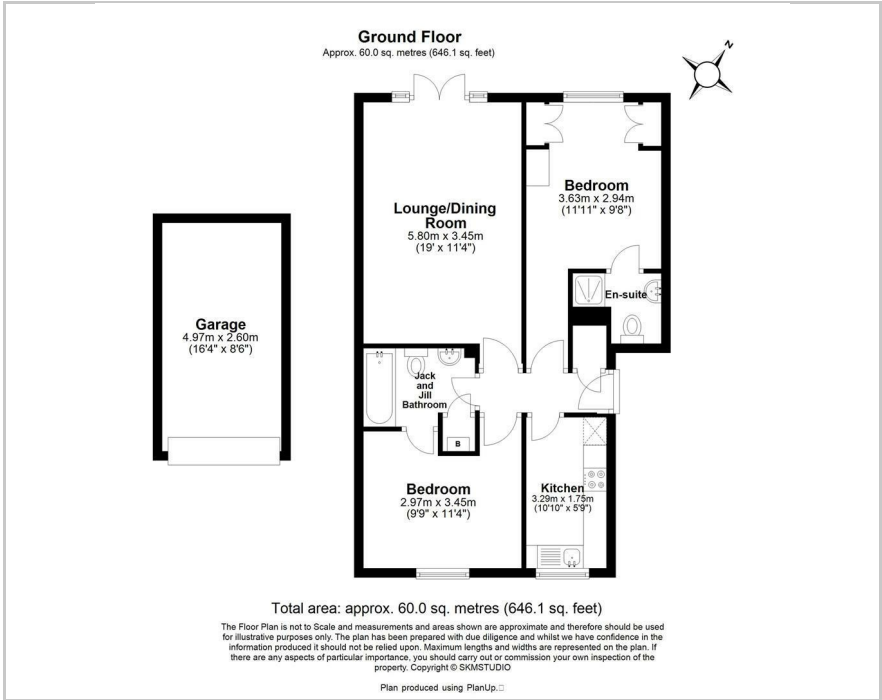




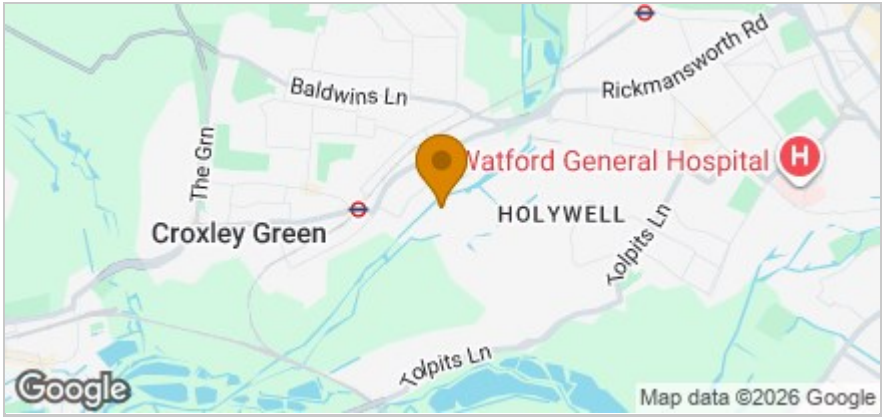
22 Basildon Close, Watford, WD18 8WL
Price Guide £359,950



Floor Plan



Area Map



These particulars, whilst believed to be accurate are set out as a general outline only for guidance and do not constitute any part of an offer or contract. Intending purchasers should not rely on them as statements of representation of fact, but must satisfy themselves by inspection or otherwise as to their accuracy. No person in this firms employment has the authority to make or give any representation or warranty in respect of the property.

163 New Road, Croxley Green, Hertfordshire, WD3 3HB
Tel: 01923 711651 Email: sales@grosvenorestateagents.co.uk www.grosvenorestates.co.uk

Accommodation

- Chain free, vacant possession
- Ground floor living with direct access to communal grounds
- Tranquil canal-side setting with open green space and passing boats
- Quiet and peaceful estate near to Croxley Green and Watford
- Garage and parking
- Suitability for downsizers, older buyers, or those seeking a peaceful, low-maintenance home

Viewing

Please contact our Grosvenor Estate Agents Ltd Office on 01923 711651 if you wish to arrange a viewing appointment for this property or require further information.

Energy Efficiency Graph

